

Best choice for dry tool sharpening

AZTEC cBN WHEELS

- Consistent, high quality cBN (cubic Boron Nitride) abrasive which offers 85% longer life than standard cBN wheels
- Advanced heat-reducing bond conducts heat away from the workpiece for freer cutting action and extended wheel life; helps maintains cutting tool steel integrity and extends tool life
- AZTEC III lubricating bond eliminates steel braze and loading; AZTEC .007 allows increased infeed (start at .007) for high stock removal

TIER: **BEST**
BOND: **AZTEC**

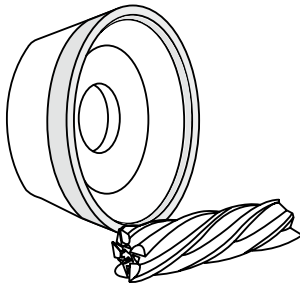
SIZE (D x T x H)	SPECIFICATION	PART #
Type 11V9 Flaring Cup – cBN		
3-3/4 x 1-1/2 x 1-1/4 Insert Length 3/8" (ME92192)	AZTEC .007-100-1/16	690141 95683
	AZTEC .007-150-1/16	690141 95679
	AZTEC III 100T-1/16	690141 91832
	AZTEC III 120T-1/16	690141 91833
	AZTEC III 150T-1/16	690141 91834
	AZTEC III 100T-1/8	690141 91838
5 x 1-3/4 x 1-1/4 Insert Length 7/16" (ME98298)	AZTEC III 120T-1/8	690141 91839
	AZTEC III 150T-1/8	690141 91840
	AZTEC .007-100-1/16	690141 95685
	AZTEC III 100T-1/16	690141 91841
	AZTEC III 120T-1/16	690141 91842
	AZTEC III 150T-1/16	690141 91843
	AZTEC .007-100-1/8	690141 95686
	AZTEC .007-150-1/8	690141 95682
	AZTEC III 100T-1/8	690141 91844

Standard Package = 1 Wheel

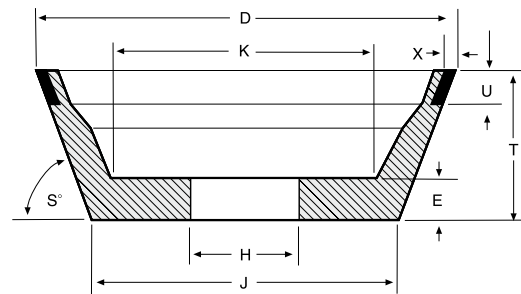
TIER: **BETTER**
BOND: **B99**

SIZE (D x T x H)	SPECIFICATION	PART #
Type 11V9 Flaring Cup – cBN		
3-3/4 x 1-1/2 x 1-1/4 Insert Length 3/8" (ME92192)	CB100-TB99-1/16	690141 91719
	CB100-TB99-1/8	690141 91722
	CB120-TB99-1/8	690141 91723
	CB150-TB99-1/8	690141 91724
	CB120-WB99-1/16	690141 91720
5 x 1-3/4 x 1-1/4 Insert Length 7/16" (ME98298)	CB120-TB99-1/8	690141 91715
	CB150-TB99-1/8	690141 91716

Standard Package – 1 Wheel



Type 11V9
D - Diameter
K - Inside Diameter of Flat
H - Hole
E - Back Thickness
T - Thickness
J - Hub Diameter
U - Insert Length
X - Abrasive Depth
S - Face Angle



Refer to “Brake Controlled Truing Devices” and “Dressing Sticks” in the Dressing Solutions section for truing and dressing products.